



Queensland Australia
GREAT FOR QUEENSLAND

TRAVELLING TO BRISBANE AIRPORT?



Major road and car park changes from 3 December 2009



International Terminal
Nancy-Bird Way
EXIT

Domestic Terminal
Moreton Drive

The way you get to and from Brisbane Airport, and access to parking at the Domestic Terminal, is set to change.

In early December 2009 Brisbane Airport's \$220 million Northern Access Road will open.

For more than two years work has been progressing to the west of Airport Drive to deliver a new road system that will provide a second entry and exit for Brisbane Airport.

Two major roads and a number of link roads and bridges will be delivered when the Northern Access Road Project is complete. The major roads are:

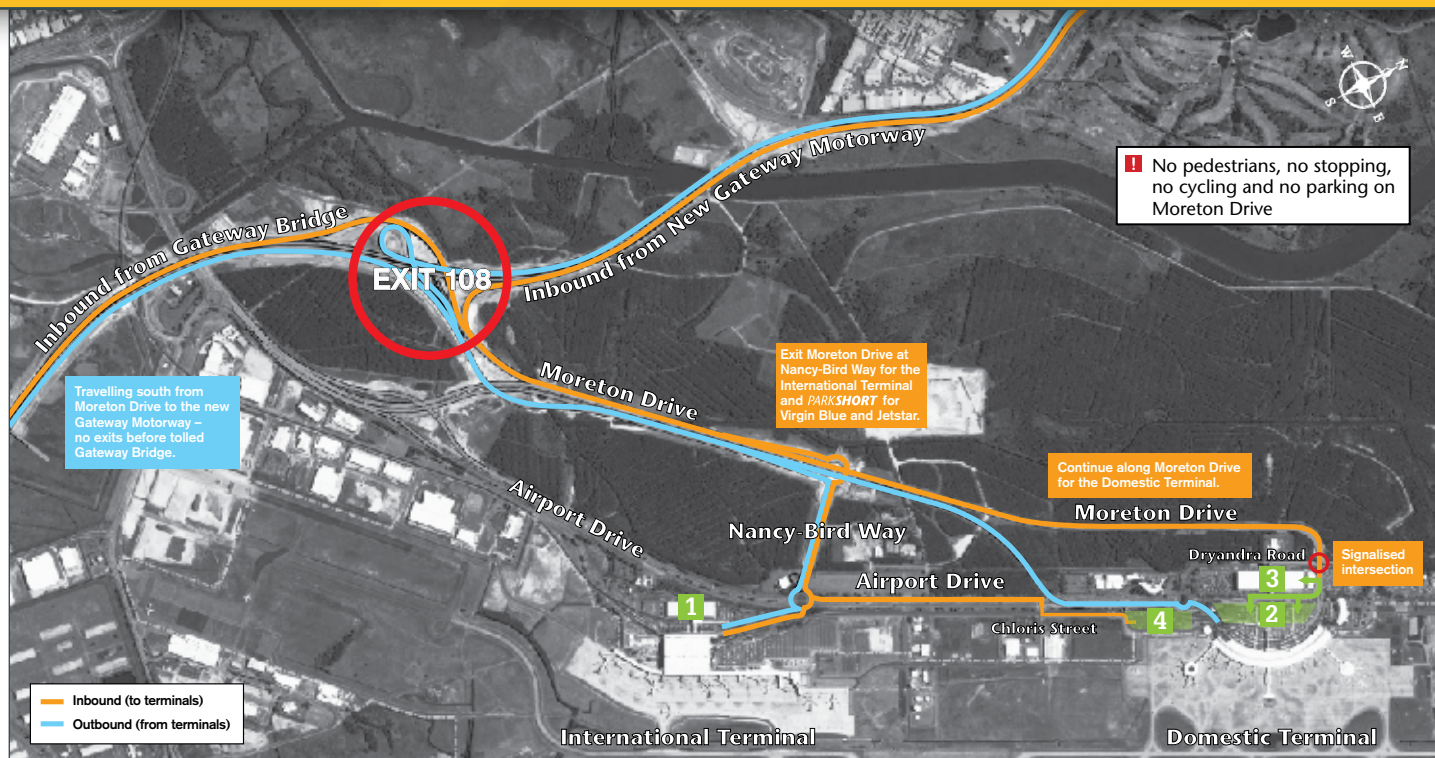
- » Moreton Drive – linking the new Gateway Motorway at Exit 108 to the International and Domestic Terminals.
- » Nancy-Bird Way – linking Moreton Drive to the International Terminal.

Important information inside:

- » How to enter and exit Brisbane Airport via the new road network.
- » How to access existing car parks at the Domestic Terminal.
- » How to access a new car park at the Domestic Terminal, best for Virgin Blue and Jetstar.

For more information visit www.brisbaneairport.com.au

Travelling to and from the airport – north or south



Travelling **TO** the airport from the north or south

Inbound – Follow **orange line**

If you are using the new Gateway Motorway to travel to Brisbane Airport from the north or south, you will have direct access to Moreton Drive.

Travelling from the new Gateway Motorway?

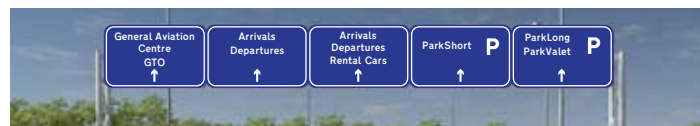
- » Take Exit 108 off the Gateway Motorway north or south bound.
- » Travel along Moreton Drive following signage to the terminals.

Travelling to the International Terminal?

- » Follow the signs to the International Terminal – leave Moreton Drive at the Nancy-Bird Way exit.

Travelling to the Domestic Terminal?

- » Continue along Moreton Drive to access the Domestic Terminal.
- » You will enter the Domestic Terminal precinct at a new signalised intersection at the northern end of the existing multi-level **PARKLONG** car park.
- » Before reaching the intersection, check the overhead gantry sign to move to the correct lane for your destination.



Travelling **FROM** the airport to the north or south

Outbound – Follow **blue line**

- » Moreton Drive will provide access back onto the new Gateway Motorway to head north or south.
- » Follow the signs from the International or Domestic Terminals to access Moreton Drive and the new Gateway Motorway.

- ! If you use the southbound exit from Moreton Drive to the New Gateway Motorway, you will travel over the tolled Gateway Bridge. There are no exits to Kingsford Smith Drive or the city before the bridge.
- ! There is no exit outbound from Moreton Drive to Nancy-Bird Way and the International Terminal. If you are travelling from the Domestic Terminal to the International Terminal use Airport Drive.

For travel between the Domestic and International Terminals, use Airport Drive only.

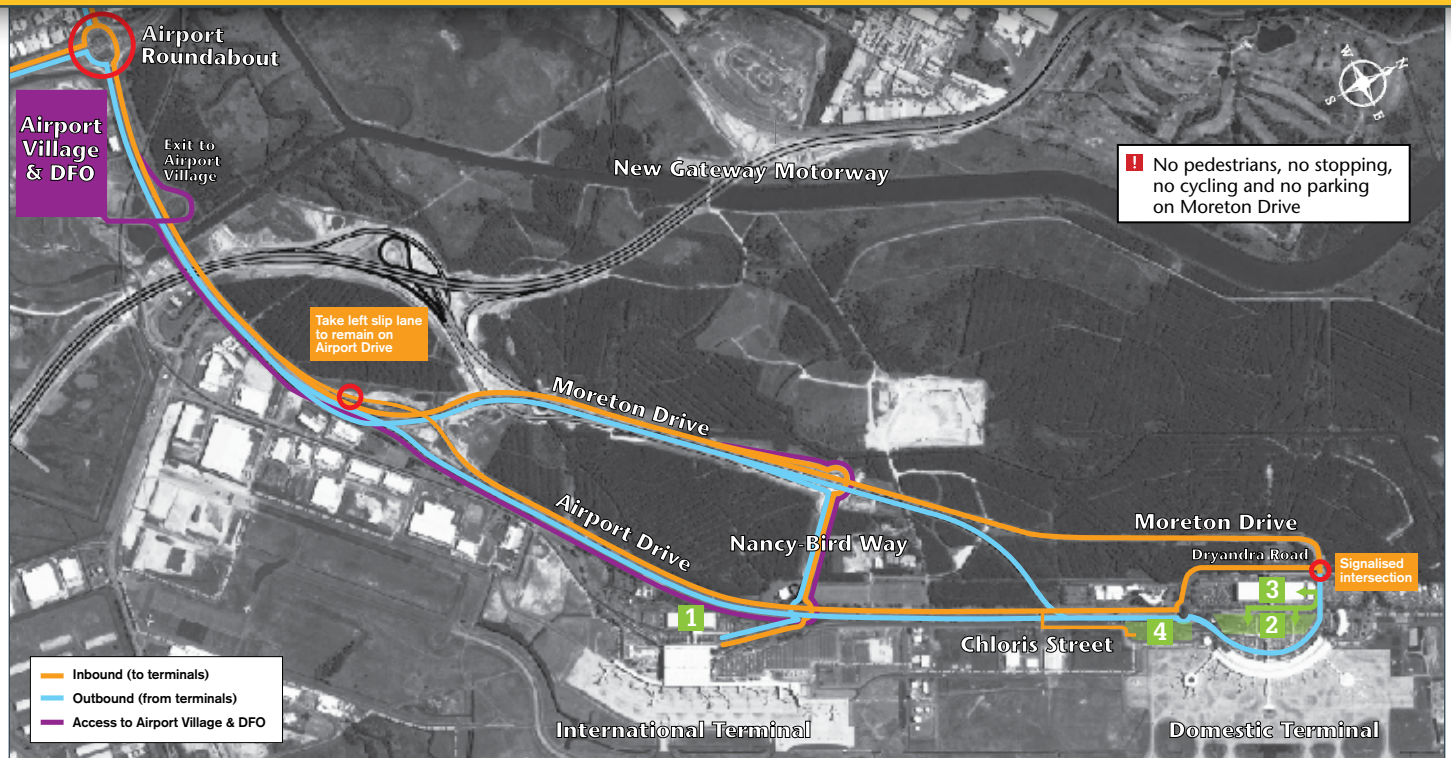
Access to car parks

The opening of Moreton Drive will change car park arrangements at the Domestic Terminal.

- 1** Parking at the International Terminal
Follow the signs from Moreton Drive or Airport Drive to the multi-level undercover car park.

- 2** Existing **PARKSHORT** car park (best parking up to 4hrs all airlines)
Access via Moreton Drive or Dryandra Road.

Travelling to and from the airport – city or west



Travelling **TO** the airport from the city or west

Inbound – Follow orange line

If you are travelling to Brisbane Airport from the city via Kingsford Smith Drive or from the west via the East-West Arterial use the current Airport Drive entry.

- » Enter Airport Drive from the existing airport roundabout.
- » The main flow of inbound traffic on Airport Drive will join Moreton Drive.
- » Follow signage on Moreton Drive to access the International and Domestic Terminals.

Want to stay on Airport Drive?

- » If you wish to stay on Airport Drive, use the left hand slip lane to do so.
- » Follow the signs on Airport Drive to the International or Domestic Terminals.
- » Follow the gantry signs to move to the correct lane for your destination.

Travelling **FROM** the airport to the city or west

Outbound – Follow blue line

- » Exit the airport via Airport Drive and the airport roundabout.
- » If you are travelling outbound on Moreton Drive, follow the signs saying City or West to exit the airport via Airport Drive.

- ! **There is no exit outbound from Moreton Drive to Nancy-Bird Way and the International Terminal. If you are travelling from the Domestic Terminal to the International Terminal use Airport Drive.**

Travelling **TO** the Airport Village

Follow purple line

The DFO, Village Markets, Novotel Hotel or other Airport Village businesses can be accessed from Airport Drive or Moreton Drive.

- » From the city or west use the existing airport roundabout and Airport Drive following signs to the Airport Village precinct.

- » If you are travelling on Moreton Drive toward the terminals, take the Nancy-Bird Way exit and turn right at the International Terminal roundabout, travelling south along Airport Drive to the Airport Village exit.

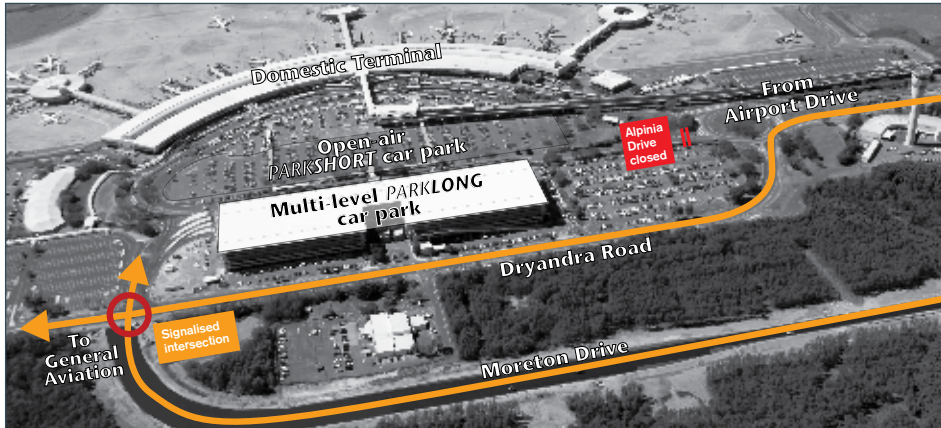
For travel between the Domestic and International Terminals, use Airport Drive only.

3 Existing multi-level **PARKLONG** car park (includes **PARKVALET**) (best parking 4hrs+ all airlines)
New entries to this car park. Access via Moreton Drive or Dryandra Road.

4 New **PARKSHORT** car park (best parking up to 4hrs Virgin Blue and Jetstar)
Open from 3 December. Access from Chloris Street via Airport Drive.

Domestic Terminal precinct – major changes to roads and access to car parks

When Moreton Drive opens there will be major changes to the way that vehicles enter the Domestic Terminal precinct and access parking facilities within the precinct.

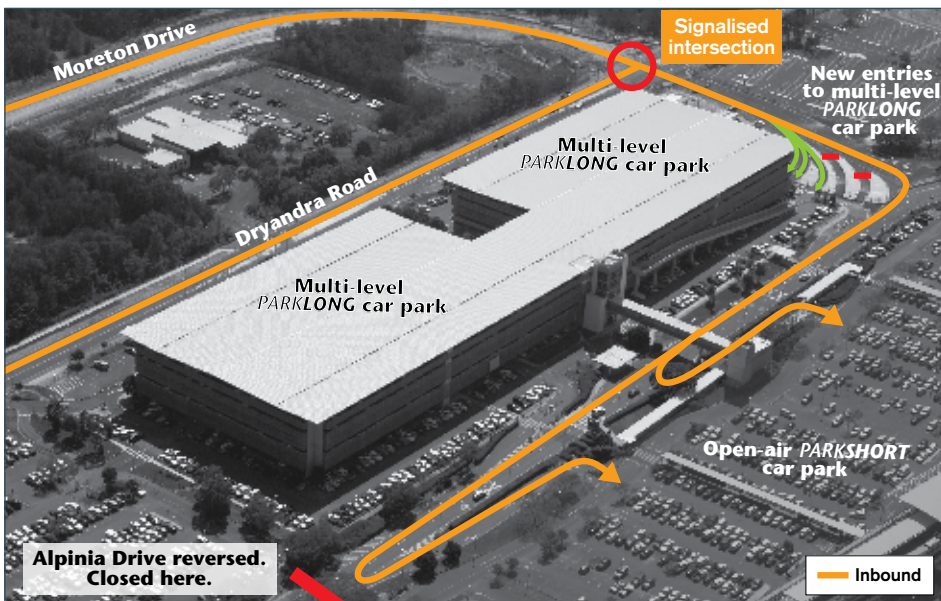


Arriving at the Domestic Terminal

A large proportion of traffic will arrive via Moreton Drive, moving into the precinct through a new signalised intersection with Dryandra Road.

Traffic coming to the Domestic Terminal from Airport Drive will arrive via Dryandra Road, turning right into the precinct at the signalised intersection.

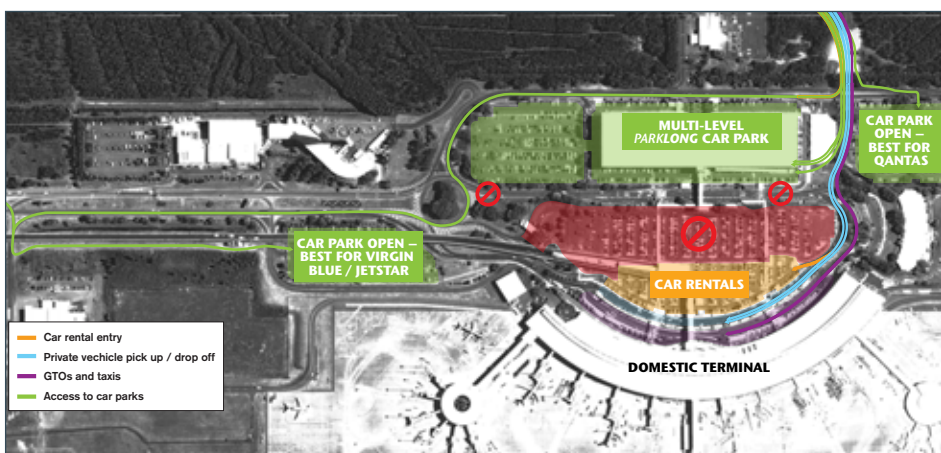
Signage will direct motorists to the correct lanes to access public car parks, car rental returns and pick up/drop off area.



Accessing car parks at the Domestic Terminal

Entries to the existing multi-level **PARKLONG (4 hrs+)** facility and the existing open-air **PARKSHORT (up to 4 hrs)** facility will change. Directional signage will be in place.

- ➔ Enter multi-level **PARKLONG** car park from new entries here (also provides access to **PARKVALET**).
- ➔ Loop back to enter open-air **PARKSHORT** car park.



Future Changes to Parking

Around March 2010 it is proposed to commence construction of a new multi-level **PARKSHORT** car park where the existing open-air car park is today.

At that time the existing open-air car park would close, with **PARKSHORT** facilities provided at the car park shown in this brochure as best for Virgin Blue and Jetstar, along with another that will be best for Qantas. The existing multi-level **PARKLONG** facility will operate as normal.

Further information on these changes will be provided ahead of work starting.

NEW open-air **PARKSHORT** car park to open 3 December (best for Virgin Blue and Jetstar parking)

The new car park is located at the southern end of the Domestic Terminal and will provide best access for Virgin Blue and Jetstar customers wishing to park for up to 4 hours. Take the Nancy-Bird Way exit from Moreton Drive following the signs on Airport Drive to the car park entry.